



*Enjoy College Life  
with All the  
Comforts of Home!*

## Live, learn, and play at SGC!

Our on-campus living options, Tiger Village I (male) and Tiger Village II (female), offer contemporary suites with all the amenities of home. SGC's residence halls feature semi-private, furnished suites, computer labs with high-speed internet access, private and group study rooms, multipurpose entertainment spaces, laundry/vending, and 24-hour security.

Space is limited... Reserve NOW!



### FEATURES

- 2 and 4 bedroom floor plans
- Fully furnished
- Private bedroom
- Semi-private bath
- Mini-blinds
- Living room (in select units)



### PEACE OF MIND

- On campus
- Secure buildings
- Swipe card access to buildings and suites
- Deadbolt locks on bedroom doors
- State of the art fire safety system
- Emergency call boxes
- 24-hour emergency maintenance
- Live-in professional staff
- 24/7 security and police presence

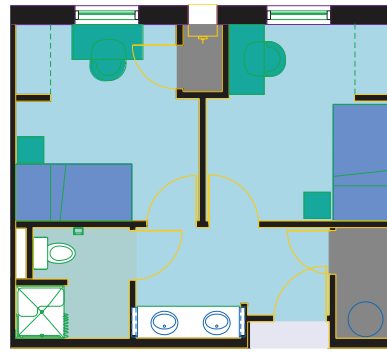


### COMMUNITY

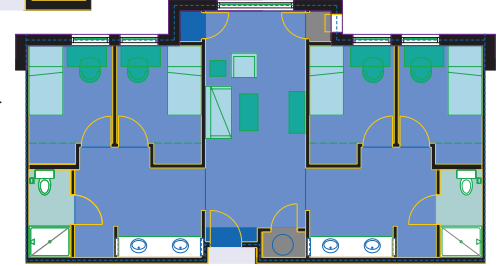
- All-inclusive rent: expanded cable TV, wireless high-speed internet, electricity, and water
- Computer lab with internet access
- Individual and group study rooms
- Free tutoring within the residence halls
- Resident Assistants on each floor
- Social gathering spaces with campus views
- Activities for every interest
- Adjacent to SGC's New Dining Hall and the Clower Student Center
- Laundry facility in each residence hall
- ADA-accessible units

## TOP 5 REASONS TO LIVE ON CAMPUS

1. Save time and money by living close to class
2. Improve the quality of your education
3. Create long-lasting friendships
4. Stay active in campus life
5. Enjoy on-campus recreational/social facilities



◀ 2 Bedroom, 1 Bath - 435 sq. ft.



4 Bedroom, 2 Bath ▶  
982 sq. ft.

(Only Available in  
Tiger Village I)



## COST COMPARISON

### On-Campus Housing (2011-12):

SGC Residential Suite	\$2,125
14 Meal Plan	\$1,400
<b>Total Cost Per Semester</b>	<b>\$3,525</b>

### Off-Campus Housing (4 months):\*

2-Bedroom Apartment Rent	\$2,400
Utilities	\$800
Basic Cable	\$200
High-Speed Internet Access	\$240
Pest Control	\$100
Gas	\$500
Groceries	\$1,000
Dining Out	\$400
Living Room Set (1/2 per semester)	\$500
Bedroom Set	\$500
<b>Total Cost Per Semester</b>	<b>\$6,640</b>

**Cost Savings While Living on Campus \$3,015**

\*estimated costs based on local expenses

## MEAL PLAN OPTIONS - 2 CHOICES (2011-2012)

1. 14 Meal Plan, 2 meals a day 7 days a week  
.....\$1,400
2. 19 Meal Plan, Any time the cafeteria is open  
.....\$1,600

Plus \$100 Flex Dollars to spend at SGC's Vending, Dining Services, Bookstore and Coffee Corner.

## For more information:

- Call SGC Housing at 912.260.4429
- Email [housing@sgc.edu](mailto:housing@sgc.edu)
- Visit [www.sgc.edu](http://www.sgc.edu)



**South  
Georgia  
College**

A Residential State College of the University System of Georgia  
100 West College Park Drive, Douglas, GA 31533  
912.260.4200 | 800.342.6364 (GA) | [www.sgc.edu](http://www.sgc.edu)