

“Without Data,  
You Are Just Another Person  
with An Opinion.”  
—Author Unknown

By Danielle Buehrer  
Director of Institutional Effectiveness  
09/11/2011

---

---

---

---

---

---

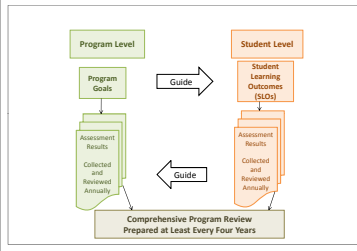
---

---

---

---

**SGC's Two-Level General Education Assessment Plan**




---

---

---

---

---

---

---

---

---

---

**SGC General Education Assessment Plan at the Program Level**

General Education Goals	Assessment Methods
1. Students will demonstrate the ability to communicate at a college level in written and oral form.	• Course success rates of courses that assess general education goals will meet or exceed those of the previous year.
2. Students will demonstrate a basic knowledge of literature, the arts, and other cultures.	• Mean scores from CCSSE questions that assess general education goals will meet or exceed those from CCSSE Cohort.
3. Students will apply critical thinking processes in the development of informed opinions and values.	• Proficient scores from MAPS skill dimensions that assess general education goals will meet or exceed those from previous year.
4. Students will demonstrate the ability to understand mathematical information and perform mathematical manipulations to analyze data from a variety of sources.	
5. Students will demonstrate sufficient knowledge of natural laws and processes to understand scientific issues in a modern society.	
6. Students will demonstrate sufficient knowledge of the history, nature and interactions of individuals and groups to understand the individual's role in the community, state, nation and world.	
7. Students will demonstrate current knowledge of health issues and solutions to maintain a healthy mind and body.	
8. Students will demonstrate the ability to use appropriate technology to produce presentations and reports and/or conduct research and data analysis.	

---

---

---

---

---

---

---

---

---

---

**Core Classes that Assess General Education Goals**

Core Courses	General Education Goals							
	1	2	3	4	5	6	7	8
Area A								
ENGL 1101			X					
ENGL 1102	X	X						
MATH 1111			X	X				
Area B								
COMM 1110	X							
CSIT 1105			X					X
Area C								
ENGL 1112								X
Area D								
BIOL 1107/1108					X			
BIOL 2230B/2211K						X		
PHYS 1111/2211					X			
HITH 1103							X	
Area E								
HIST 2112						X		
SOCI 1101						X		

---

---

---

---

---

---

---

---

---

---

**Example of Course Success Rates Over the Last 3 Years**

Course	Percent of Students Who Passed with a C or Better		
	Fall 2008	Fall 2009	Fall 2010
BIOL 1107K	61%	50%	47%
COMM 1110	83%	80%	63%
ENGL 1101	68%	75%	64%
ENGL 1102	65%	71%	85%
ENGL 2112	95%	86%	85%
HIST 2112	59%	62%	67%

---

---

---

---

---

---

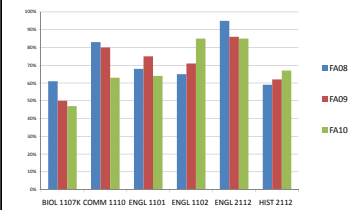
---

---

---

---

**3-Year Trend Analysis of Course Success Rates**




---

---

---

---

---

---

---

---

---

---

